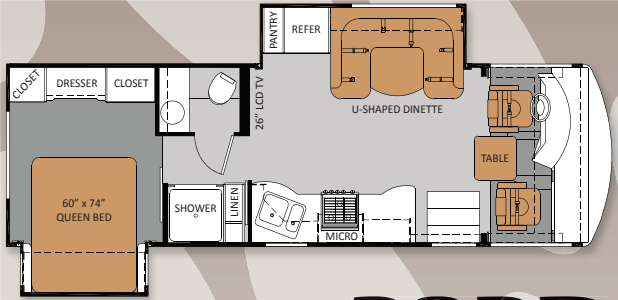
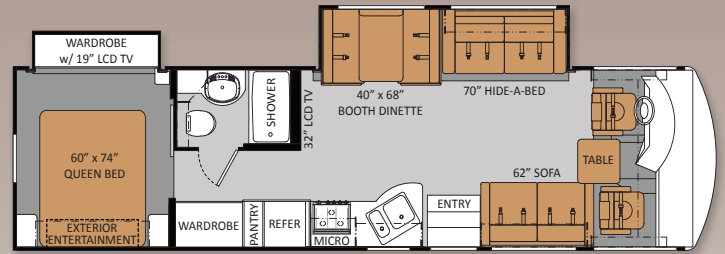


DAYBREAK

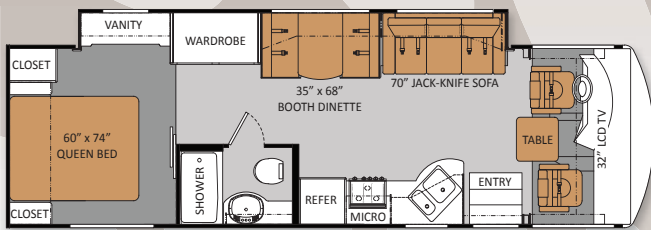
Class A Motorhomes



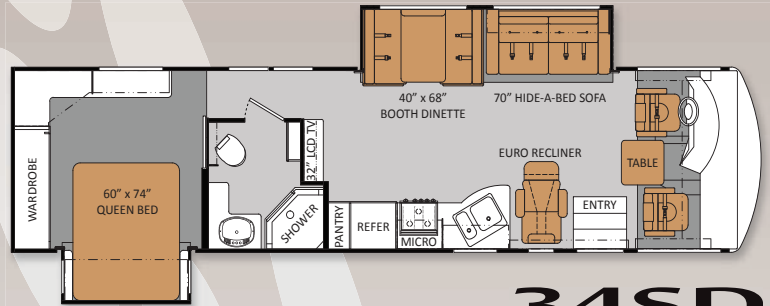
28PD



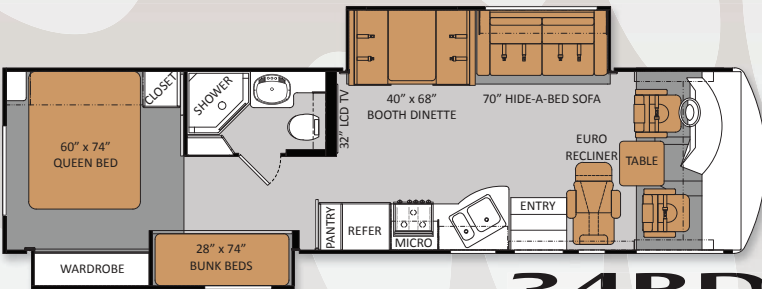
34KD



30FS



34SD



34BD



Specifications

	Model	28PD	30FS	34BD	34KD	34SD
WEIGHT	Ford Chassis with 6.8L Triton Engine	V-10	V-10	V-10	V-10	V-10
	Gross Vehicle (GVWR)	18,000	22,000	22,000	22,000	22,000
	Gross Combined (GCWR)	26,000	26,000	26,000	26,000	26,000
MEASUREMENTS	Exterior Length (without ladder)	29'8"	31'11"	35'6"	34'7"	36'5"
	Exterior Height (with air conditioning)	12'7"	12'7"	12'7"	12'7"	12'7"
	Exterior Width (without mirrors)	101"	101"	101"	101"	101"
	Interior Height	82"	82"	82"	82"	82"
	Awning Size (manual/electric)	14'	16'	13'	16'	16'
CAPACITIES	Fuel (gallons)	80	80	80	80	80
	LPG (pounds)	81	81	81	81	81
	Fresh/Waste/Gray Water (gallons)	65/47/47	65/47/47	65/47/47	65/47/47	65/47/47
	Water Heater (gallons)	6	6	6	6	6
	Exterior Storage Capacity (cubic feet)	99	121	131	163	200

Daybreak Standard & Optional Features

BODY CONSTRUCTION/EXTERIOR

Stainless Steel Wheel Liners	S
Front & Rear Mud Flaps	S
Neoprene Vibration Dampner	S
Wide Body Design	S
Fiberglass Front & Rear Caps	S
Power Patio Awning	S
Side Mounted Awning Over Slideouts	S
White Fiberglass Exterior with Deluxe Graphics	S
Partial Paint Package	O
Gel-Coat Sidewalls	O
Full Body Paint Package with Gel-Coat Sidewalls	O
Radius Corner Domed TPO Roof	S
Exterior graphics packages	S
Locking Exterior Aluminum Storage Doors	S
Patio Light	S
Rotocast Storage Compartments	S
Pre-Wired Entertainment Hook-ups in Storage Area	S
Full Basement Pass-Through Storage	S
Dual Pane Windows	O
Electric Entrance Step	S
Outside Kitchen (34KD)	O
Rear Ladder	S

AUTOMOTIVE/COCKPIT

AM/FM Radio with In-Dash CD Player	S
Cruise Control	S
Tilt Steering Wheel	S

Windshield Privacy Drape	S
Emergency Start Circuit	S
Map Light	S
Side Mount Mirrors	S
Soft Touch Leather Captain's Chairs	S
3- Point Wall Mounted Seat Belts	S
Sun Visors	S
Electronically Controlled Dash Air Conditioning	S
Automatic 4-Point Leveling Jacks with Touch Pad Controls	O
Backup Monitor System Prep	S
Backup Monitor System with Audio	O
Side Cameras (Requires Backup Monitor)	O
Pedestal Table Between Captain's Chairs	S
Cup Holders	S
5,000-lb. Trailer Hitch	S

INTERIOR

Soft Touch Leather Sofa (34KD)	S
Soft Touch Leather Hide-a-Bed Sofa (N/A 28PD)	S
Soft Touch Leather U-Dinette (28PD)	S
Booth Dinette (N/A 28PD)	S
Lambrequin Window Treatments	S
Night Shades	S
Linoleum Throughout Kitchen & Bath	S
Pillow Package	S

15,000 BTU Ducted Front Air Conditioner	S
Rear Air Conditioner Prep	S
13,500 BTU Rear Air Conditioner (Requires Freedom Package)	O

GALLEY

Double Door Refrigerator	S
3-Burner Range & Oven with Cover	S
Microwave Oven	S
Sink Cover	S
Lighted Power Range Hood	S
Ball Bearing Drawer Guides	S

ENTERTAINMENT & ACCESSORIES

32" LCD TV with Antenna/Booster/Co-Ax Connection (N/A 28PD)	S
26" LCD TV (28PD)	S
TV Area & Co-Ax Connection in Bedroom	S
19" LCD TV in Bedroom	O
Exterior Entertainment (34KD)	O
Roof Mount Satellite Prep	S

BEDROOM/BATHROOM

Inner Spring Mattress	S
Designer Bedspread & Pillow Shams	S
Designer Headboard	S
Bunk Beds (34BD)	S
Wardrobe IPO Bunk Beds (34BD)	O
Shower with Surround	S
Glass Shower Door	S
Skylight in Shower	S
Power Vent	S

Porcelain Toilet	S
------------------	---

SAFETY & CONVENIENCE

Entry Door with Dead Bolt Lock and Obscure Glass Window	S
Carbon Monoxide, Propane Gas & Smoke Detectors	S
Passenger Seat Belts in Select Areas	S
Under Hood Light	S
Exterior GFCI Receptacle	S

ELECTRICAL & PLUMBING

Onan® Microquiet™ 4.0 Gas Generator (4000-watt)	S
60-amp Converter	S
Deep Cycle 12 Volt Battery	S
Battery Disconnect	S
30-amp/120 Volt Service	S
6-Gallon Gas with Electronic Ignition Water Heater	S
Water Heater Bypass Kit	S
Enclosed Heated Holding Tanks	S

FREEDOM PACKAGE

Onan® Marquis Gold 5.5 kW
Dual 6 Volt Auxiliary Batteries
50-amp/120 Volt Service
Gas/Electric Water Heater

PREFERRED PACKAGE

Side Mount Power Mirrors with Heat
8.0 CuFt Double-Door Refrigerator
iPod® Docking Station
Dash Fans

DAYBREAK

VEHICLE LOADING: Every effort has been made to provide the greatest number of options for the recreation vehicle owner. Along with these choices comes the responsibility to manage the loads that are imposed by the choices so that they remain within the manufacturer's specified chassis weight limits. Do not overload the recreation vehicle.

IMPORTANT: Towing capacity may vary by chassis model, floorplan, options and loading of the vehicle. This may result in a towing capacity which is less than the maximum capacity of the hitch. Do not exceed the vehicle's Gross Combined Weight Rating (GCWR), or the hitch rating. A separate functioning

brake system is required for any towed vehicle or trailer weighing more than 1,000 lbs. (450 KG) when fully loaded. Liquid capacities and weights are approximations only.

WARNING: This information is intended as a guide only. Weights of individual vehicles may vary. Consult your owner's manual and weight sticker affixed to each vehicle for complete loading, weighing, and towing instructions.

WARRANTY: The vehicles are provided with a twelve (12) month, 15,000-mile limited warranty. Chassis, component part and appliance manufacturers may issue limited warranties covering those portions of

the vehicle not covered by the limited warranties issued by Thor Motor Coach. To learn what portions of the vehicle are excluded from coverage under the limited warranties issued by Thor Motor Coach, please contact your selling dealership or Thor Motor Coach directly, or review the warranty packet inside the vehicle.

Product information, specifications, and photography in this brochure were as accurate as possible at time of printing. Photographs may contain some features that are optional on your vehicle. Since we continually strive to improve our products, actual products may differ. The manufacturer reserves the

right, at any time, to make changes in product design, materials, component specifications and pricing, without notice. All capacities are approximate and dimensions are nominal. Some features or options may be different or unavailable in Canada.

