

BROOKSTONE

BY COACHMEN



BROOKSTONE

BY COACHMEN



LUXURY IN THE GREAT OUTDOORS

The way it was meant to be.



Coachmen left no stone unturned designing the new Brookstone Luxury fifth wheel. From the industries tallest slide outs at 6'7" tall, to the industry's largest living area TV at 42" in all floorplans, you will truly come home to luxury every day. The 360RL, shown here in Saddlebrook, gives you the maximum amount of living space with two super slides without sacrificing any storage and has a maximum amount of cabinet space.





Shown above is the kitchen of the 367RL with the optional 12 cubic foot 4 door refrigerator. Dare to compare the storage in the Brookstone to anyone else in the industry! The competition boast 25 doors and drawers in their kitchen, compare that to 35 in a

Brookstone depending on your floor plan and options! You can also see the residential pull out spray faucet that feeds one of the industry's largest sinks.



With the Brookstone kitchen you will not only be the envy of the campground, but every chef that enters. Storage abounds with our custom Hickory cabinet doors and stiles. Du Pont Corian countertops are standard in every Brookstone kitchen. We also supply all of your cooking needs with a standard 30" convection oven as well as a 22" conventional oven with 3 burner range. A remote controlled Create A Breeze Fan and a wine rack with goblet holder finish off your feature packed kitchen. Our extra wide kitchen base drawers will hold all your utensils plus more, and come with full extension ball bearing drawer guides. We also offer a slide out pantry with full extension boxes and solid wood drawer fronts. Additionally, we include a second slide out pantry with a hardwood maple butcher-block top.



No need to ever worry about where to place your laptop when staying in your Brookstone. Every Brookstone has a designated desk space so your computer will always be in one convenient place.

The 367RL, shown here in Saddlebrook, provides a standard 42" TV, along with a luxurious entertainment area and is complete with Corian desktop and optional 5100 BTU electric fireplace.

Coachmen knows RV's. We have put our 40 plus years of experience into each and every Brookstone. We spend countless hours talking to you the customer and listening to your ideas. Every Brookstone is built with you in mind to help you live a comfortable, worry free life, even while away from home.





Brookstone comes with a standard residential 60" x 80" deluxe pillow top queen bed with storage underneath. There are also night stands on each side of the bed, as well as his and her shaded reading lights to give you

all the comforts of home. Our spa inspired luxury bedding is completely reversible from the pillow shams to the bed spread and even the bed scarf! This allows you to change your look whenever you want!



The Brookstone master suite will give you the feeling of a four star hotel every night. The spacious dresser will be sure to hold even the largest items with ease. Brookstone's immense wardrobe boasts cedar lining and shoe storage. The armoire comes standard with lowered doors and washer/dryer prep or can be used for more hanging space. And Don't forget about the standard 32" LCD HD TV to catch all your favorite late night shows.

A



B



C



BROOKSTONE

POPULAR INTERIOR FEATURES



A. Custom Hickory cabinet doors and stiles along with DuPont Corian counter tops not only give you storage but style.

B. Full extension ball bearing drawer guides are standard on every drawer we put in a Brookstone

C. Rear entertainment center, with a full width Corian top and TV that moves up or down with the flip of a switch

D. The magic night sleep system sofa is standard in every Brookstone. No need to strain your back and unfold the sofa. With a convenient remote and the press of a button the sofa unfolds and inflates itself. It has a storage drawer underneath!

E. Brookstone's one-piece fiberglass shower has no seams and won't leak like the competitions two-piece plastic shower.





BROOKSTONE

POPULAR EXTERIOR FEATURES



G

A. Brookstone has an industry best 165 cubic feet of clean and convenient storage! Compare that with the competitors 145 cubic feet. No need to worry about spills with our no mess easy to clean diamond plate material.

rays protecting your investment from fading. Reflecting all solar heat, this keeps your coach cooler and more efficient by running your air conditioner less. They also provide a greater visual barrier than tinted windows.

B. Not only do we have the largest pass through storage in the industry but we also have a third TV mounted on a swing arm contained in the storage area. No need to hassle with moving your bedroom TV outside, there is always one there to enjoy outside under the awning.

E. You want ease of set up? Take a look at the Brookstone docking station. Everything from winterization valves, tank pull handles, phone, satellite, cable city water fill, black tank flush, outside shower, and even a light and 110 outlet, all located in a one piece station that won't leak!

C. Our engineers created Turn Tec technology that works with our specially designed front cap and chamfered frame. No need for a slider hitch with Brookstone.

F. Rear electric jacks make setup a breeze... a standard on every Brookstone.

D. Tinted windows are a thing of the past. Brookstone uses solar reflective windows, which block out 98% of all UV

G. Make a statement when you pull into the campground with our optional paint package.

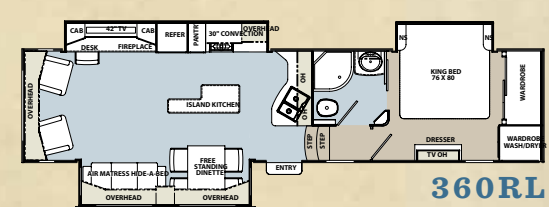
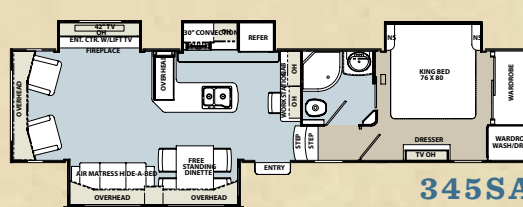
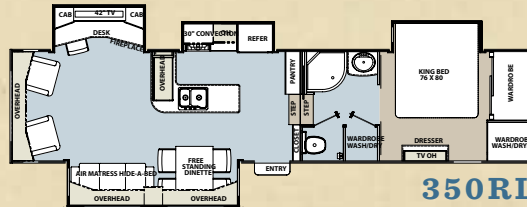
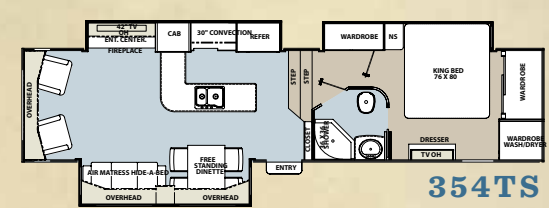
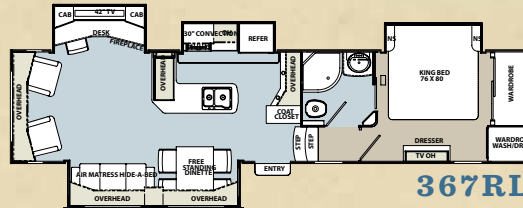
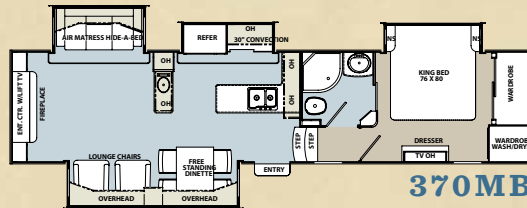
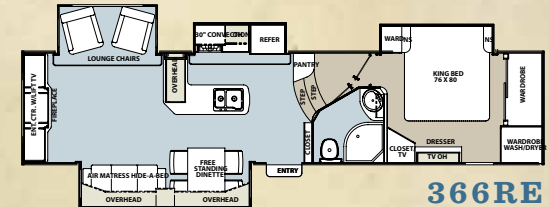
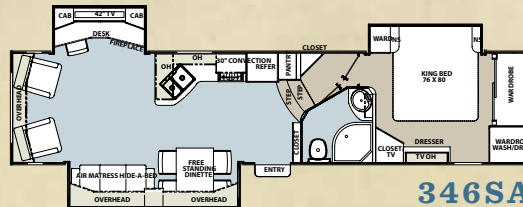
E



F



BROOKSTONE FLOORPLANS



Floorplan	Length	UVW	Hitch Weight	GVWR	Fresh Water	Grey Water	Black Water
324RL	TBA	TBA	TBA	TBA	TBA	TBA	TBA
346SA	38'6"	10,880	2,460	15,500	77	90	45
345SA	38'6"	11,305	2,530	15,500	77	90	45
354TS	38'6"	12,450	2,650	15,500	77	90	45
350RL	38'6"	12,250	2,450	15,500	77	90	45
360RL	38'6"	12,180	2,490	15,500	77	90	45
366RE	38'6"	11,783	2,590	15,500	77	90	45
367RL	38'6"	11,326	2,450	15,500	77	90	45
370MB	38'6"	12,150	2,560	15,500	77	90	45

BROOKSTONE STANDARDS & OPTIONS

INTERIOR

- 42" HD LCD TV
- FM/CD/DVD player with 5.1 surround sound
- Digital TV antenna with booster
- Magic Night sleep system air mattress
- hide-a-bed sofa
- (2) Swivel, rocker recliners
- Solid hickory hardwood cabinet stiles (frames)
- Solid hickory raised panel cabinet doors
- Solid hardwood slide out fascias
- Solid hardwood dresser tops
- Full extension ball bearing drawer guides
- Residential carpeting with padding
- Beauflor flooring throughout kitchen and bathroom
- 6'7" tall living area slide outs with oversized overhead cabinets
- Day/night shades (living area)
- Oil rubbed bronze hardware
- End table with storage and magazine rack
- Corian topped laptop station
- Ceiling fan with tulip lighting
- Systems monitor panel
- Satellite prep
- Carbon monoxide detector
- Central vacuum
- Lighting upgrade package

EXTERIOR

- High gloss gel coated fiberglass exterior walls
- Aluminum wheels
- 165 cubic feet drop frame pass through storage area with diamond plate no mess floor
- 19" HD LCD TV in pass through storage area
- Extra large entry handle
- 30" wide entry door with RV lock System and Storm door Screen door
- Solar reflective mirror finish windows
- Under mount spare tire and carrier
- Independent front jacks with dual motors
- Power awning
- Power rear jacks
- 7,000 lbs axles with 8 lug hubs
- Trail Air Equa Flex suspension
- Patio scare lights
- 50 AMP service and detachable power cord
- Hydraulic slide outs with selector valves
- Exclusive one piece docking station
- Black tank flush

- Outside speakers
- Rear accessory hitch
- Snap jack pins
- Laminated floor construction
- Ducted forced air heated holding tanks, water lines, and dump valves along with enclosed and insulated underbelly
- Extra large, insulated, radius slam latch baggage doors
- Attic vents
- 40,000 BTU furnace with automatic ignition
- 15,000 BTU air condition with quick cool
- 16 gal. effective DSI gas/electric water heater
- Engineered frame and front cap create Turn Tee technology
- Aluminum framed vacuum bonded sidewalls
- Whole coach water filtration system
- 12V battery disconnect
- Roof ladder
- Rear gel coated fiberglass cap
- R-values
 - Walls, R-10
 - Floors R-28
 - Ceiling R-38 with Eskimo Package

GALLEY

- DuPont Corian counter tops and sink covers
- Residential sized stone cast sink with pull out spray faucet
- 22" oven with high output range and automatic igniter
- Solid hickory hardwood refrigerator inserts
- Extra large 8 cubic foot double door refrigerator
- 30" convection microwave oven
- Extra large full extension drawers
- Free standing dinette with flip up storage and four elegant chairs with padded seats and backs
- "Comfort Air" power fan with remote
- Hard wood wine rack with goblet holder
- Pantry with five full extension drawer boxes and hardwood fronts (N/A 346)
- Second pull out pantry with solid maple butcher block and storage

BEDROOM

- Spa inspired reversible bedding package with accent pillow and bed scarf
- Extra large dresser with residential size drawers

- 32" HD LCD TV
- Residential 60" x 80" deluxe pillow top queen bed
- Nightstand with storage underneath and bed shelf with queen bed (two bed shelves with king bed)
- His and her shaded reading lights in bed slide
- Wire and frame for 2nd AC
- Extra deep front wardrobe with cedar lining
- Armoire with washer/dryer prep for stackable washer/dryer

BATHROOM

- One piece fiberglass shower with glass surround and adjustable shower head
- Residential 40" vanity height with mirrored medicine cabinet
- Porcelain toilet with foot flush pedal
- Heat and air conditioning ducts in every bathroom for comfort

COACHMEN CONVENIENCE PACKAGE — STANDARD

- Door side and off door side security scare lights
- Solar reflective windows
- Extra large double door refrigerator with raised hardwood insert
- Range cover
- Exterior folding grab handle
- Interior grab handle
- Glass shower door
- Day/night shades (main living area)
- Wire and frame for second AC
- 72" sofa with magic night sleep system air mattress
- Hardwood cabinet stiles and cabinet doors
- Smoked glass cabinet doors
- Shower skylight
- Free standing dinette
- Outside shower
- Black tank flush
- Ceiling fan
- Central vacuum system
- Cedar lined closet
- Whole coach water filter
- High gloss gel coated exterior fiberglass
- One-piece fiberglass shower

LUXURY PACKAGE

- Independent front jacks with dual motors
- Power rear jacks
- Power awning
- Digital tv antenna with booster
- DVD/CD with 5.1 surround sound
- Beauflor flooring
- 30" entry door with RV Lock System and storm door screen door
- 30" convection microwave oven
- 15,000 BTU AC
- Cable and satellite ready
- Comfort air fan in kitchen
- Equa flex suspension
- Under mount spare tire kit
- 42" HD LCD TV in living area
- 32" HD LCD TV in bedroom
- 19" HD LCD TV in pass thru storage
- 12 volt battery disconnect
- Aluminum wheels
- Roof ladder
- Fiberglass rear cap
- Bus style slam latch baggage doors

POPULAR OPTIONS

- Trail air hitch
- Dual pane solar reflective safety glass windows
- Slide awning package (double slide)
- Slide awning package (triple slide)
- Slide awning package (quad slide)
- High back desk chair
- King bed
- Wireless rear back up camera
- Low profile ducted 2nd AC with Dual Zone Control
- 2nd Comfort air fan
- Generator ready
- Onan Marquis gold 5.5 LP generator
- 12 cubic foot refrigerator
- Electric fireplace
- Roadside assistance
- CSA upfit
- Leather sofa
- Leather recliners
- Full-body paint
- Solar panel prep
- Level up six point auto level system

FREE ROADSIDE ASSISTANCE



Coachmen provides one year of free Travel Easy™ emergency roadside assistance for those who buy a new Coachmen RV. Administered by Coach-Net®, this service gives Coachmen owners 24/7 access to operational, technical and emergency road services, including towing, fuel delivery, jump starts, lockout service, tire changes, mobile mechanic and unlimited technical advice. So no matter where you go, we're ready to help!

BIG BENEFITS FOR NEW OWNERS

Owners club discounts and more — A free one-year membership in the Coachmen Owners Association comes with the purchase of any Coachmen product. This add-on value not only provides a host of travel services and campground discounts, but also a 24/7 online service that locates needed services while offering member savings at more than 180,000 merchants across the country. And, of course, the COA is an excellent way to share experiences with other Coachmen owners through rallies and caravans.



Coachmen Recreational Vehicle, a division of Forest River
P.O. Box 30, Middlebury, IN 46540

YOUR BROOKSTONE DEALER

Scan this barcode using a QR Reader on your smart phone to learn more about Forest River.



All information contained in this brochure is believed to be accurate at the time of publication. However, during the model year, it may be necessary to make revisions, and Coachmen reserves the right to make all such changes without notice, including changes in prices, colors, materials, equipment and specifications, as well as the addition of new models and the discontinuance of models shown in this brochure. Therefore, please consult with your Coachmen dealer and confirm the existence of any materials, design or specifications that are material to your purchase decision. **Printed in USA FOR 0850**